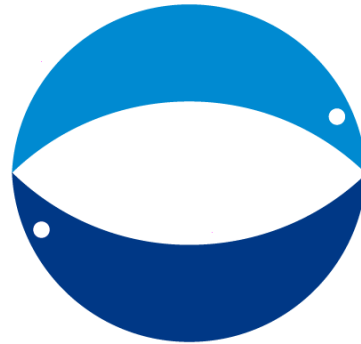


Galaxidi Marine Farm S.A.

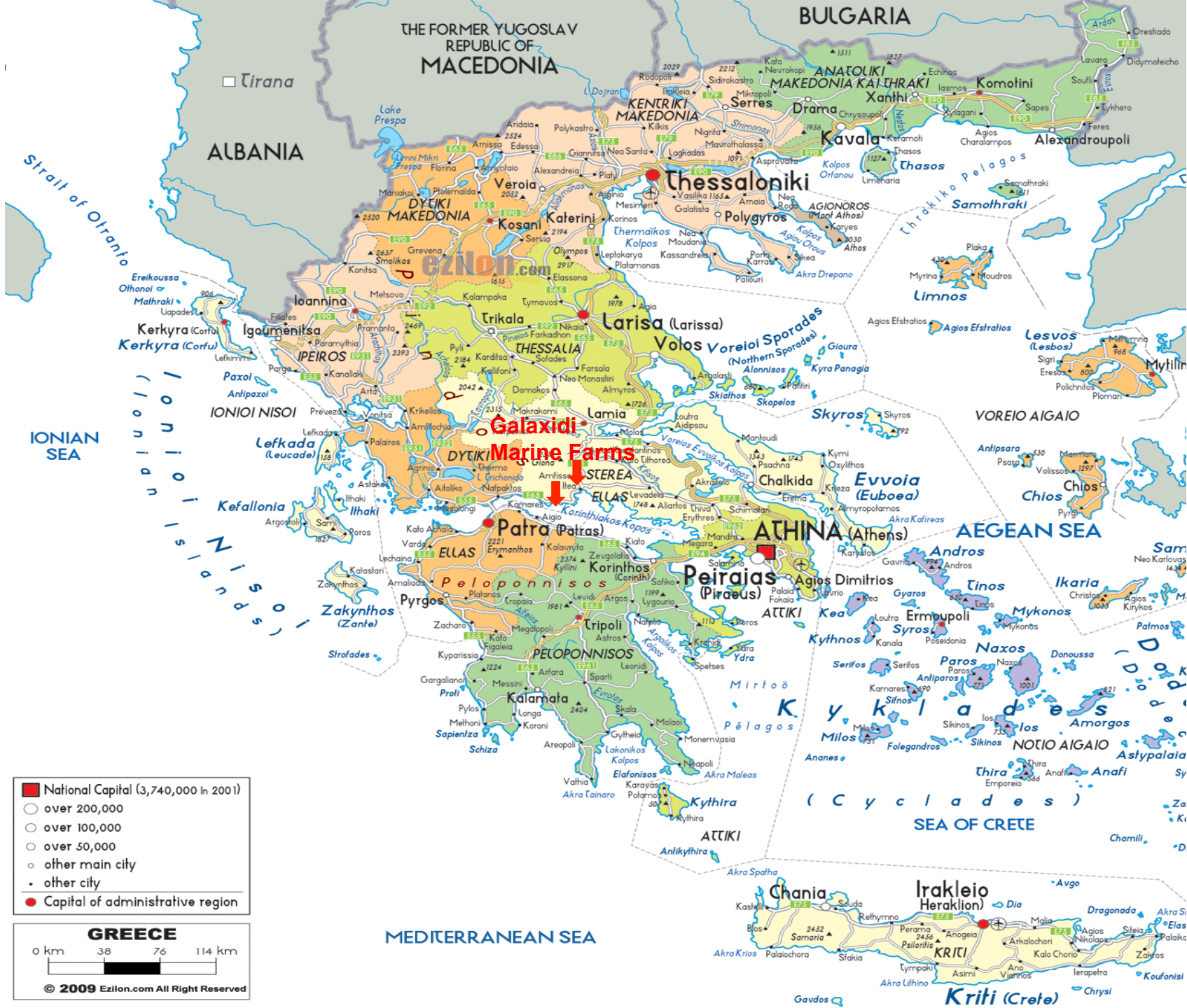


Brief presentation of the company
and its contribution to the project
Diversify

Bari, 04-06/11/2014

Company's profile

- GALAXIDI MARINE FARM S.A. (GMF) was established in 1987, and it is on the northern coast of the Corinthian Gulf in central Greece.
- The biggest and most competitive production advantage of GMF is producing and growing fish “*in their natural environment*”. The cages are situated at 150 m depth, which assure the cleanest environment and the ideal growing conditions for the cultivation of fish.
- The company is listed in the Athens Stock Exchange since March 2002.



THE FORMER YUGOSLAV
REPUBLIC OF
MACEDONIA

BULGARIA

ALBANIA

Strait of Otranto

IONIAN SEA

Galaxidi
Marine Farms

- National Capital (3,740,000 in 2001)
- over 200,000
- over 100,000
- over 50,000
- other main city
- other city
- Capital of administrative region



MEDITERRANEAN SEA

SEA OF CRETE

Kriti (Crete)

Facilities- Production capacity

GMF has:

- 5 grow out sea-cage concessions,
- 2 hatchery sites and
- 1 modern packing and processing station designed to the latest EU specifications, with automatic grading and weighing machines.

The company has an annual production capacity of 8.000 tons.







Species Produced

GMF is one of the oldest and most well-known companies for its high quality products of:

- Sea Bream (*Sparus aurata*),
- Sea Bass (*Dicentrarchus labrax*),
- Red Porgy (*Pagrus pagrus*),
- Pandora (*Pagellus erythrinus*),
- Sharpsnout Sea Bream (*Diplodus puntazzo*) and
- Meagre (*Argyrosomus regius*).

Markets

The past 25 years, 95% of GMF's production has been exported, mostly to European Community countries, such as

- Spain,
- Italy,
- Germany,
- France and
- Austria.

Organic Fish Production

Since 2008 the firm produces organic Sea bream and Sea bass, based on E.U. legislation.

Today, the **entire organic production** is certified by BIO HELLAS.



GMF's contribution in Diversify



**GMF has provided fin clips from its brood stock
(together with many other hatcheries)
for the genetics study of the existing population of meagre**

ORIGIN	INSTITUTION	SAMPLES	DNA extraction (method)	PCR Inter-spe STRI	PCR Specific STRS	Reading STRI	Reading STRS
ITALY	ITTICAL	25	25 Q 1 P-Chl	yes	yes	yes	Not yet waiting sequencing
CANARY ISLAND	PCTM	30	30Q	yes	yes	yes	Not yet, waiting sequencing
TURKEY		30	30Q	yes	yes	yes	Not yet, waiting sequencing
CYPRUS	DFMS	30	30Q 7P-Chl	yes	yes	yes	Not yet waiting sequencing
GREECE	GALAXIDISA	49	46 Qiagen 3 Ph-Chl	yes	yes	Not yet waiting sequencing	yes
GREECE	HCMR	37	34 Qiagen 3 Ph-Chl	yes	yes	Not yet waiting sequencing	yes
FRANCE	IFREMER	40	40 Qiagen 3 Ph-Chl	yes	yes	Not yet waiting sequencing	Not yet waiting sequencing

Task 3.5 Spawning induction of greater amberjack and egg collection in cages – GALAXIDI



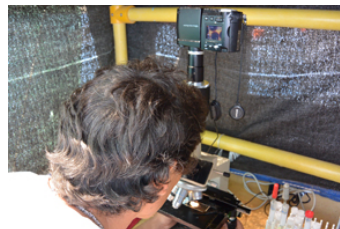
Task 3.2 Development of an optimized spawning induction protocol – available stocks

Stock	Location	Number of Individuals	Size at sampling (range in kg)	Feeding
HCMR	tanks	27	6.5-23.8	raw fish, squid
HCMR	cages	12	7.4-14.8	moist pellet
ARGO	tanks	9	8.1-11.1	live, raw fish
ARGO	cages	49	7.1-16.0	live, raw fish
FORKYS	tanks	22	7.7-10.3	raw fish, squid
GALAXIDI	cages	28	6.3-15-6	live fish
ITTICAL	tanks	20	20-30	raw fish, squid

Task 3.5 Spawning induction of greater amberjack and egg collection in cages – egg collection



Task 3.5 Spawning induction of greater amberjack and egg collection in cages – Galaxidi Marine Farms



Stock	Days after treatment	Number of females	Fecundity (eggs)	Fertilization (%)
GALAXIDI cage	3	11	10,000	100
GALAXIDI cage	4	“	30,000	100
GALAXIDI cage	5	“	30,000	100
GALAXIDI cage	6	“	60,000	66.7
GALAXIDI cage	8	“	25,000	100
GALAXIDI cage	9	“	10,000	100
GALAXIDI cage	10	“	5,000	100
GALAXIDI cage	11	“	30,000	66.7
GALAXIDI cage	2 (2 nd)*	6	no eggs were obtained from the cage	
GALAXIDI tank 1	2**	3	350,000	85.7
GALAXIDI tank 1	3	“	660,000	38.1
GALAXIDI tank 1	4	“	185,000	43.7
GALAXIDI tank 1	5	“	150,000	33.3
GALAXIDI tank 1	6	“	265,000	15.1

Task 3.5 Spawning induction of greater amberjack and egg collection in cages

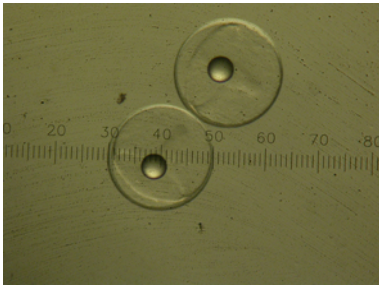


➤ High loss of eggs from the cages, due to currents!

➤ Reduce cage depth to 6 m

➤ Increase depth of egg collector from 3.5 to 5 m

➤ Transfer fish to tanks for spawning



Interests

GMF can contribute to DIVERSIFY again or participate in new projects in the fields of reproductive physiology, juvenile production, on-growing, etc.

Contact:

George Iakovopoulos

Production Manager

Galaxidi Marine Farm S.A.

george@gmf-sa.gr

info@gmf-sa.gr

Thank you for your attention

