



Co-funded by the Seventh
Framework Programme of
the European Union



Annual Coordination Meeting 2018

University of La Laguna (ULL) & Instituto Español de Oceanografía (IEO)

23-25 January 2018, Tenerife, Spain.

ULL

Universidad
de La Laguna



INSTITUTO
ESPAÑOL DE
OCEANOGRAFÍA

EFFECT OF DIETARY FATTY ACIDS ON SPAWN QUALITY IN GREATER AMBERJACK (*Seriola dumerili*) BROODSTOCK



S. Sarih¹, A. Djellata¹, J. Roo¹, C. M. Hernández¹, R. Fontanillas², G. Rosenlund², M. Izquierdo¹ and H. Fernández-Palacios¹

ECOAQUA
www.ecoaqua.eu

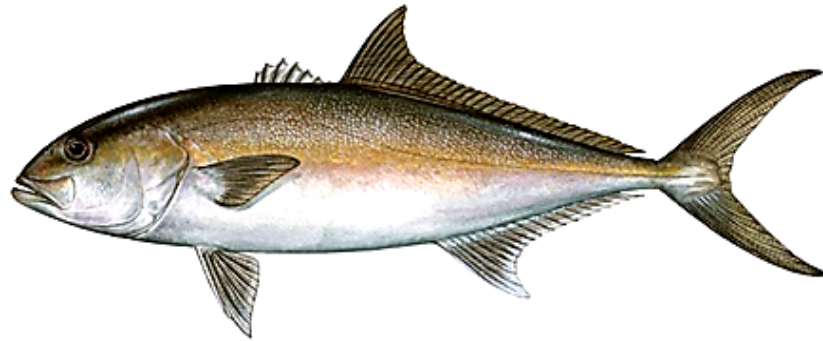
¹Grupo de Investigación en Acuicultura (GIA), IU-ECOAQUA, Universidad de Las Palmas de Gran Canaria, Crta. Taliarte s/n, 35214 Telde, Las Palmas, Spain

² Skretting Aquaculture Research Centre AS, PO Box 48, N-4001 Stavanger, Norway





Greater amberjack *Seriola dumerili* (RISSO, 1810)



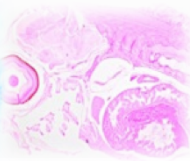
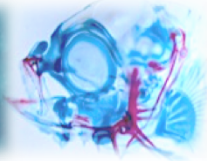
Excellent candidate to aquaculture

Excellent flesh quality (Nakada, 2000)

Rapid growth (Thompson et al., 1999; Harris et al., 2007)

High market price (García y Díaz, 1995; Thompson et al., 1999)

Adaptation to captivity (Jerez et al., 2006; Fernández-Palacios et al., 2015; Sarih et al., 2018)



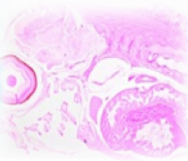
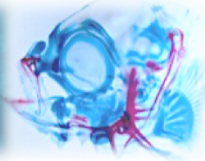
Bottlenecks

Reliable reproduction



Production of adequate numbers of juveniles





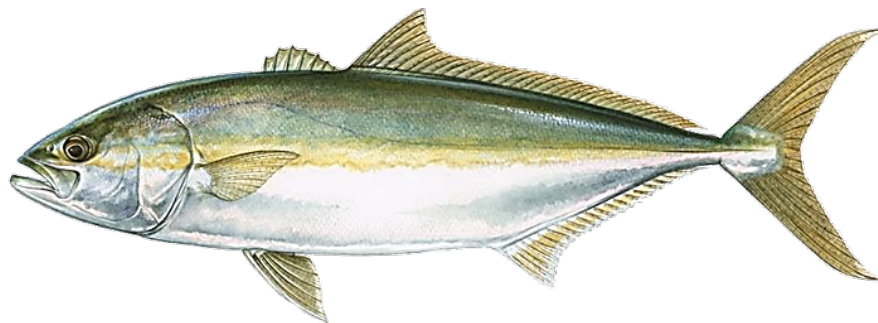
Bottlenecks

Production of adequate numbers of juveniles

Egg quality is variable and generally low (Lazzari *et al.*, 2000; Mylonas *et al.*, 2004, Jerez *et al.*, 2006; Fernández-Palacios *et al.*, 2015).

Low larval survival (Papandroulakis *et al.*, 2005)





Seriola lalandi
(Tachihara *et al.*, 1997)



Seriola quinqueradiata
(Matsunari *et al.*, 2006)

Nutritional deficiency in broodstock diet



Low egg quality and larval survival

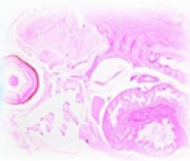
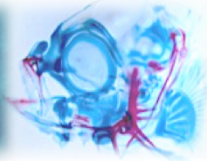


WP 9. Nutrition – greater amberjack

Task 9.3. Design adequate feeding regimes for broodstock to optimize reproduction.

Sub-Task 9.3.1 (FCTP). The optimum DHA and EPA levels as essential fatty acids for reproductive success of greater amberjack (*Seriola dumerili*) has been studied.





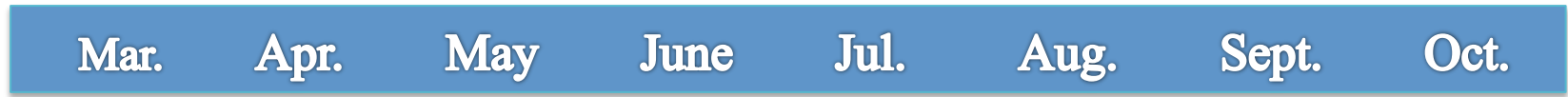
Experimental fish





Experimental design

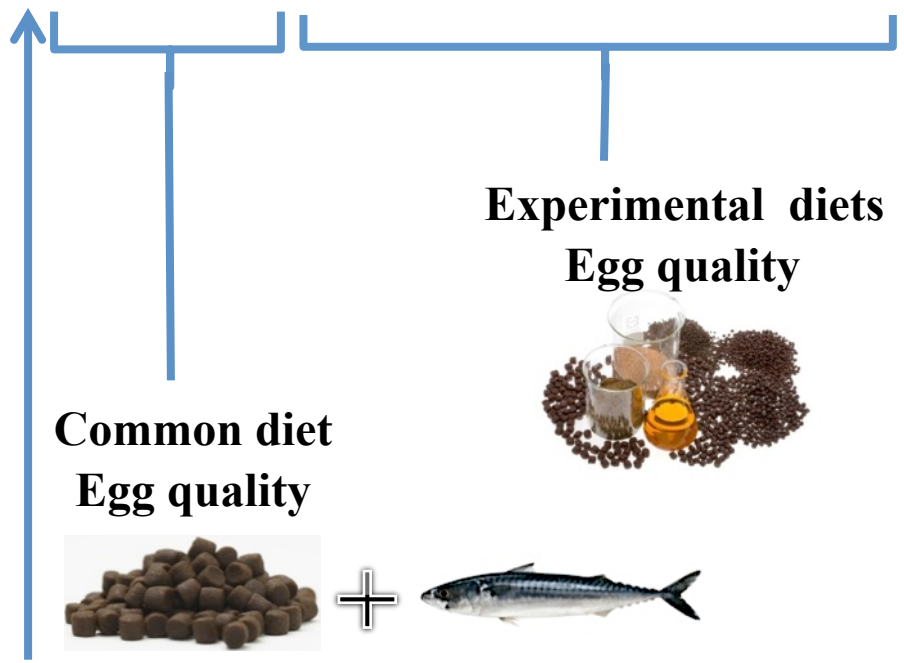
Material & Methods



Weigh & Size



Intramuscular injection



**Common diet
Egg quality**



**Experimental diets
Egg quality**



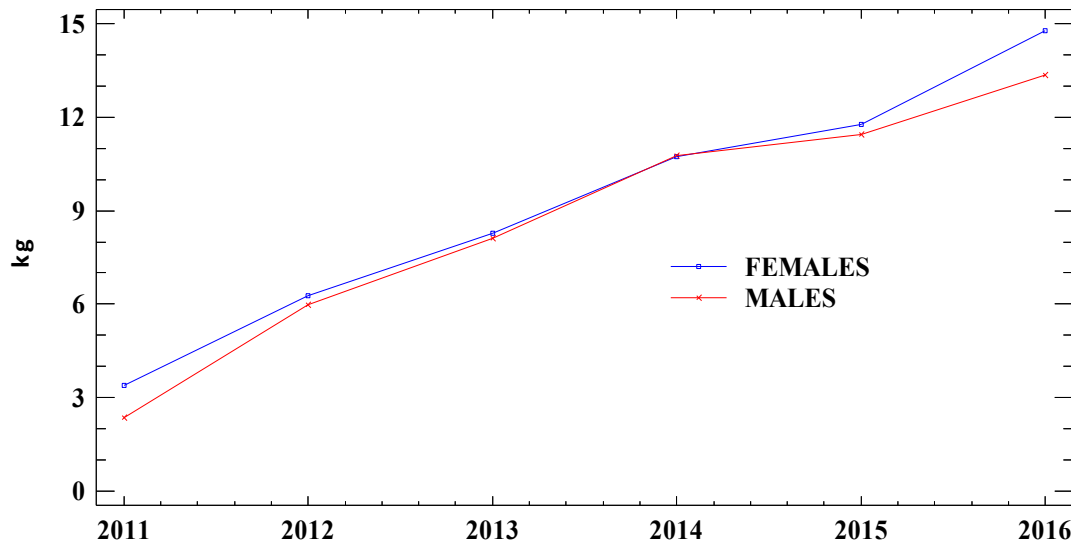


Experimental design

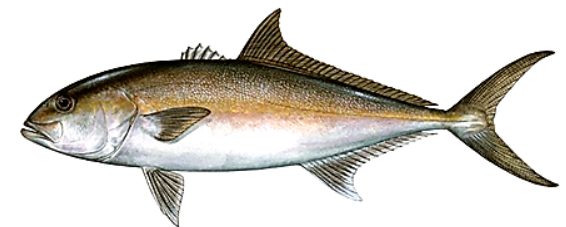


All fish were weighted and sized.

Weight evolution of broodstock lot from 2011 to 2016.



16 Broodstock selected
8 ♀: 14.62 ± 2.06 kg
8 ♂: 12.98 ± 3.45 kg





Experimental design



All females were not cannulated, neither the abdominal massage was performed on males.

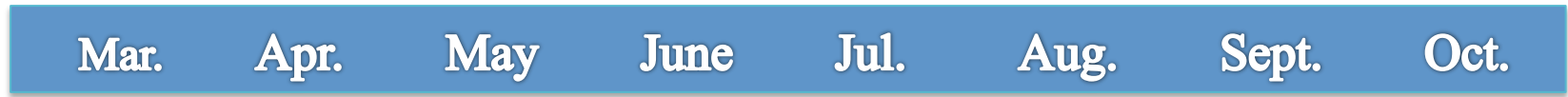
The selected fish were distributed (sex ratio 1:1) in 4 circular tanks of 40 m³ (2♀ and 2♂ in each one).



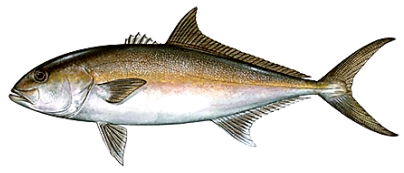


Experimental design

Material & Methods



Weigh & Size



**Common diet
Egg quality**



**Experimental diets
Egg quality**



Intramuscular injection



Experimental design

Mar.

Apr.

May

June

Jul.

Aug.

Sept.

Oct.



Intramuscular injection

GnRH α : 20 $\mu\text{g kg}^{-1}$ ♀ & ♂ (Fernández-Palacios *et al.*, 2015)

Twice a week alternating the broodstock





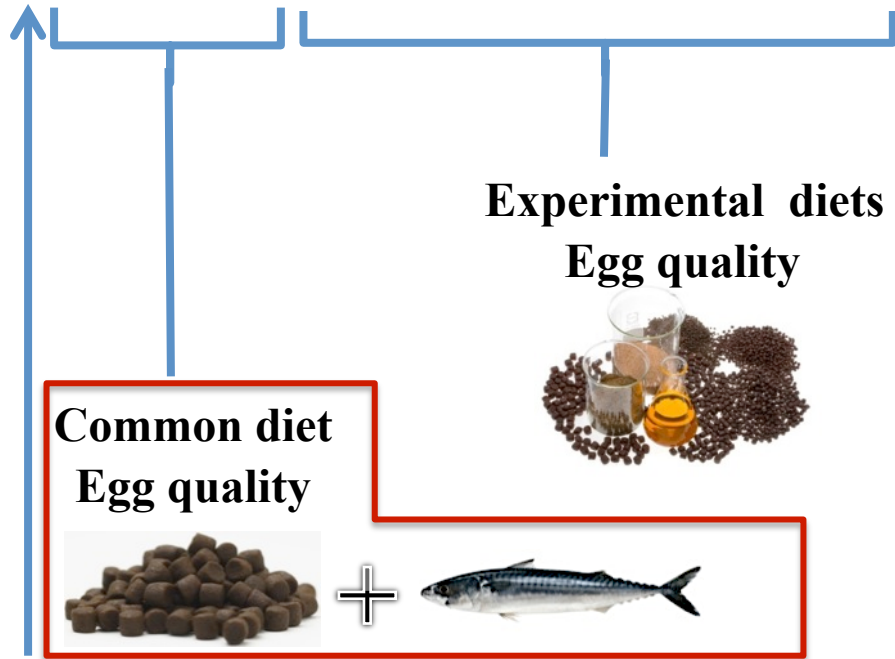
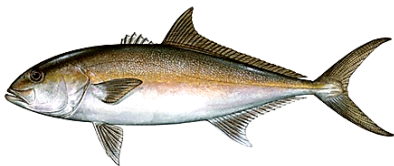
Experimental design



Material & Methods



Weigh & Size



Intramuscular injection



**Experimental diets
Egg quality**



**Common diet
Egg quality**





Experimental design

Mar. Apr. May June Jul. Aug. Sept. Oct.

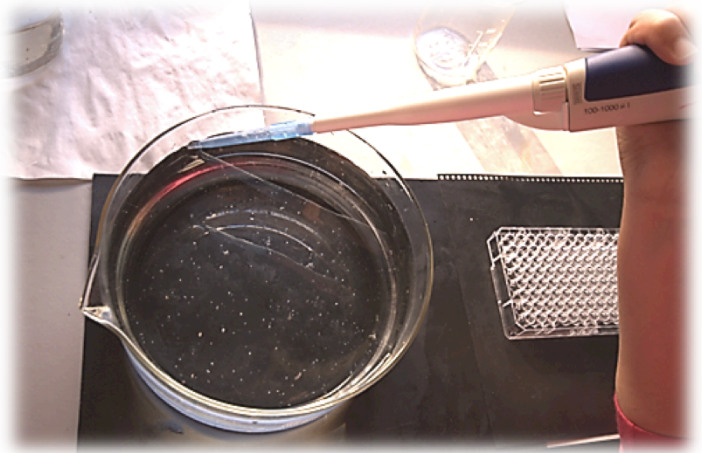


1. Common diet

Twice a week: commercial diet at 1% (13 mm, Vitalis CAL, Skretting)
Once a week: Atlantic mackerel (*Scomber scombrus*) at 2%



2. Egg quality



Material & Methods



Mar. Apr. May June Jul. Aug. Sept. Oct.

Common diet

Results

Tank	% Females with spawns	Number inductions	Number spawns	Number of eggs
1	100	12	9	2 366 100
2	100	12	7	3 080 000
3	100	12	7	2 682 000
4	100	12	8	3 008 800



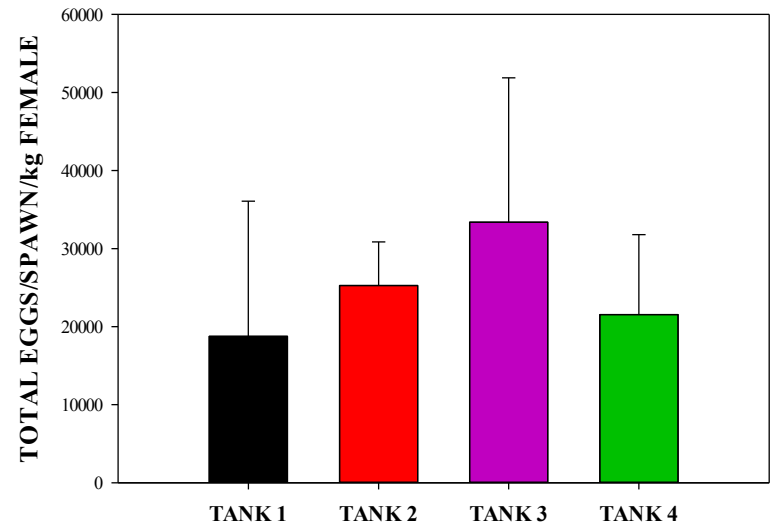
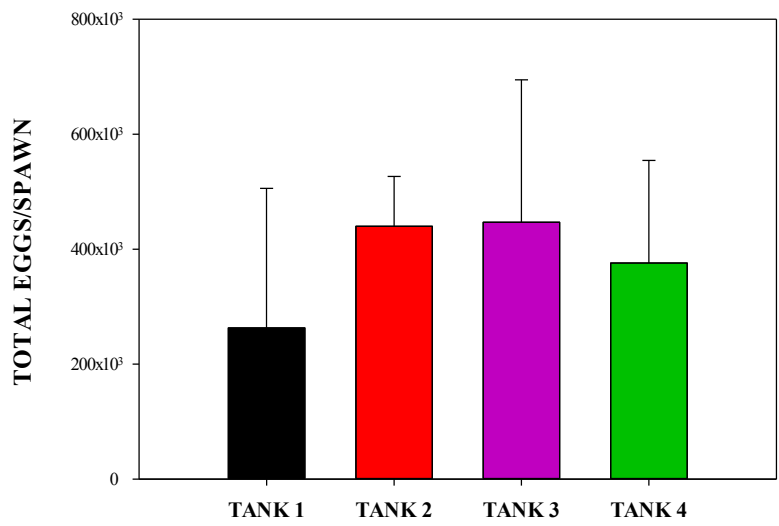
Mar. Apr. May June Jul. Aug. Sept. Oct.

Common diet

Number of eggs per spawn

Number of eggs per spawn and kg female

Results





Mar. Apr. May June Jul. Aug. Sept. Oct.

Common diet

Quality of egg and larvae obtained during the feeding period with the common diet

Tank	% Fertilization	% Viable 24h	% Hatching
1	55.66±26.22	83.43±7.50	81.04±8.03
2	61.65±15.94	88.71±0.76	86.90±0.96
3	41.93±29.61	89.58±4.55	86.67±6.01
4	64.92±14.86	86.67±7.21	82.29±8.05
Tank	% 1 dph survival	% 3 dph survival	% 5 dph survival
1	63.68±14.93	39.81±14.13	2.84±1.63
2	74.34±9.70	28.32±7.35	4.27±1.66
3	70.45±9.33	29.78±8.25	3.17±2.27
4	72.04±11.08	37.39±12.95	3.21±2.27

Selected fatty acid composition (% total fatty acids) of eggs obtained during the feeding period with the common diet

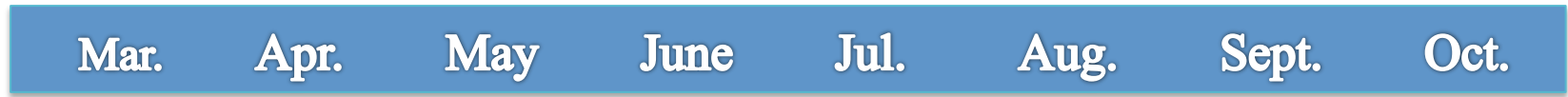
Fatty acid	Tank 1	Tank 2	Tank 3	Tank 4
14:0	1.48 ± 0.21	1.59 ± 0.08	1.81 ± 0.34	1.74 ± 0.22
16:0	15.09 ± 0.65	15.87 ± 0.53	16.44 ± 0.56	16.33 ± 1.55
18:0	5.26 ± 0.57	5.31 ± 0.67	4.51 ± 0.26	5.98 ± 1.38
18:1n-9	23.00 ± 0.53	23.31 ± 1.57	24.27 ± 1.03	23.99 ± 0.68
18:1n-7	4.04 ± 0.06	3.94 ± 0.16	4.05 ± 0.08	4.10 ± 0.04
18:2n-6	10.15 ± 0.19	10.21 ± 0.45	9.77 ± 0.51	9.51 ± 0.32
18:3n-6	0.24 ± 0.01	0.36 ± 0.04	0.31 ± 0.07	0.25 ± 0.02
18:3n-3	1.31 ± 0.07	1.29 ± 0.11	1.21 ± 0.08	1.29 ± 0.13
20:4n-6 (ARA)	1.45 ± 0.07	1.34 ± 0.04	1.21 ± 0.10	1.56 ± 0.07
20:5n-3 (EPA)	5.99 ± 0.37	5.99 ± 0.28	5.65 ± 0.50	5.16 ± 0.45
22:6n-3 (DHA)	18.63 ± 0.53	17.84 ± 0.80	17.09 ± 0.44	16.62 ± 1.66
Total n-3	33.10 ± 0.58	33.21 ± 1.53	34.81 ± 0.47	34.47 ± 0.50
Total n-6	29.91 ± 0.53	28.73 ± 1.25	27.78 ± 0.53	26.66 ± 2.11
Total n-9	12.93 ± 0.22	12.88 ± 0.41	12.24 ± 0.72	12.44 ± 0.28
Total n-3 HUFA	23.52 ± 0.50	24.00 ± 1.67	24.93 ± 1.08	24.67 ± 0.65
DHA/EPA	3.12 ± 0.24	2.98 ± 0.04	3.04 ± 0.33	3.23 ± 0.35
DHA/ARA	12.82 ± 0.35	13.36 ± 0.34	14.20 ± 1.20	10.67 ± 1.10
EPA/ARA	4.12 ± 0.32	4.48 ± 0.08	4.70 ± 0.69	3.32 ± 0.43
EPA+DHA	24.62 ± 0.49	23.83 ± 1.07	22.74 ± 0.35	21.77 ± 1.85
n-3/n-6	2.31 ± 0.05	2.23 ± 0.07	2.27 ± 0.18	2.14 ± 0.18



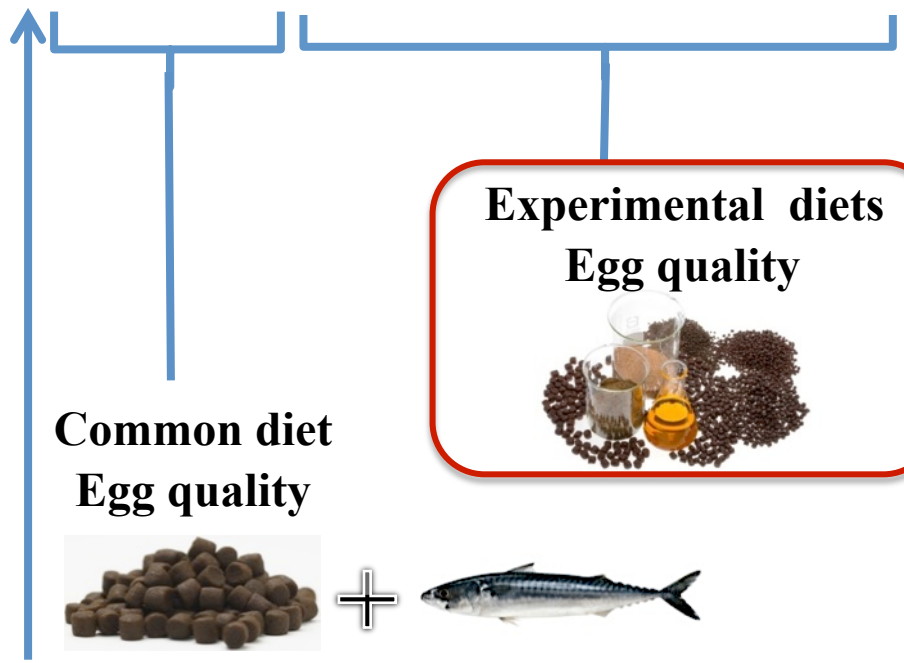
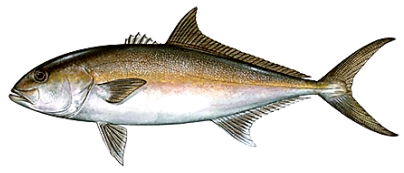


Experimental design

Material & Methods



Weigh & Size



**Common diet
Egg quality**



+



**Experimental diets
Egg quality**



Intramuscular injection



**Proportion of ingredients and proximate of the experimental diets
(Skretting Aquaculture Research Center, Stavanger, Norway).**

Diet	1	2	3	4
Linseed oil	0.00	1.52	3.01	4.50
Wheat	19.09	19.13	19.13	19.13
Wheat gluten	13.62	14.99	14.99	14.99
Fish meal	44.97	43.46	43.46	43.46
Squid meal	10.00	10.00	10.00	10.00
Fish oil	10.93	7.48	4.04	0.61
Palm oil	0.00	2.03	3.98	5.93
Premix vit. Min.	0.64	0.64	0.64	0.64
EPA+DHA (% total fatty acids)	2.80	2.17	1.57	0.96
Proximate composition (%)				
Crude protein	58.50	58.91	58.91	59.06
Crude fat	24.25	24.89	24.35	25.61
Moisture	7.27	5.41	7.22	8.30
Ash	7.46	7.19	7.25	7.30





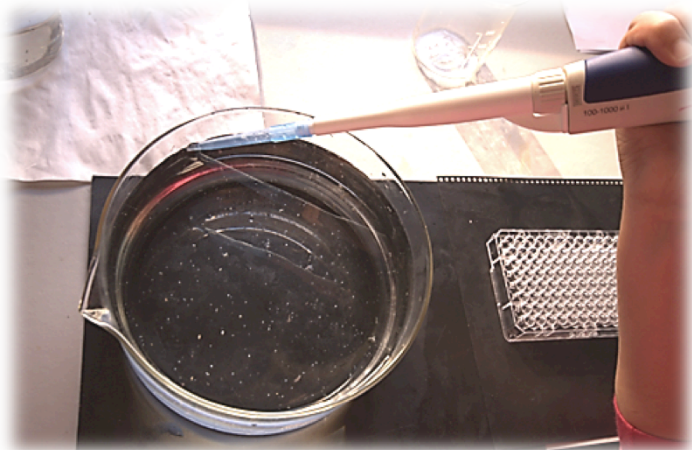
Experimental design



Experimental diets

Twice a day and 5 days a week (2% of biomass day⁻¹)

Egg quality



After three weeks of feeding with experimental diets
(Fernández-Palacios *et al.*, 1995; Tandler *et al.*, 1995).

Material & Methods



Mar.

Apr.

May

June

Jul.

Aug.

Sept.

Oct.

Experimental diets

Diet	% Females with spawns	Number inductions	Number spawns	Number of eggs
1	100	20	14	9 021 880
2	100	20	14	10 465 000
3	100	20	15	14 360 250
4	100	20	15	9 946 500

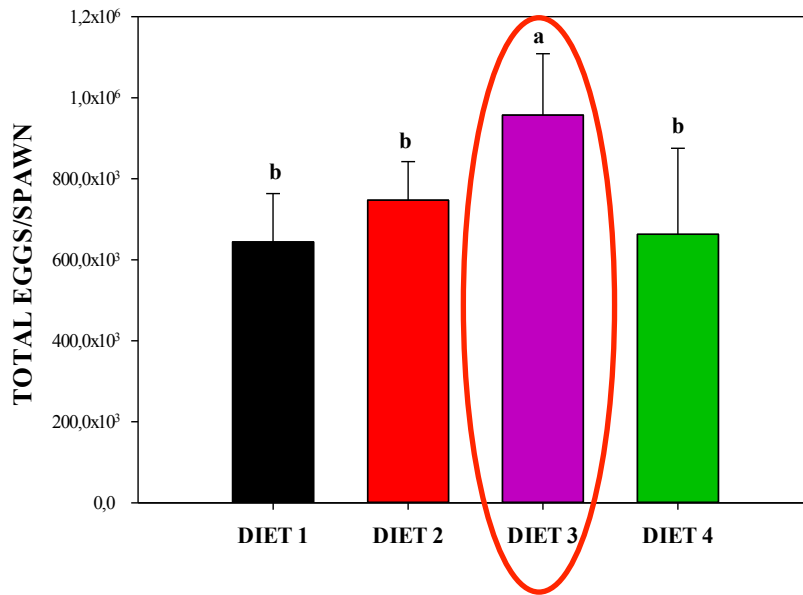


Mar. Apr. May June Jul. Aug. Sept. Oct.

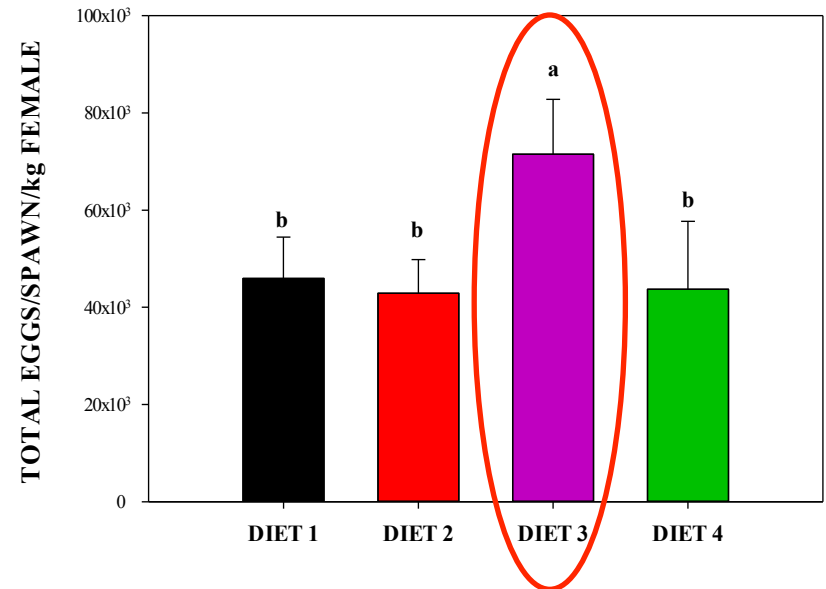


Experimental diets

Number of eggs per spawn



Number of eggs per spawn and kg female



*Bars, of the same shade, with the same letter were not significantly different ($P < 0.05$).



Mar. Apr. May June Jul. Aug. Sept. Oct.

Experimental diets

Quality of egg and larvae obtained after feeding period with the experimental diets

Diet	% Fertilization	% Viable 24h	% Hatching
1	52.42±10.64 ^c	90.28±3.28 ^b	76.99±8.94 ^b
2	69.02±7.38 ^b	85.07±1.73 ^c	79.68±3.74 ^b
3	91.76±3.12 ^a	95.99±2.81 ^a	94.22±3.62 ^a
4	86.32±1.67 ^a	93.88±2.48 ^a	92.51±2.27 ^a
Diet	% 1 dph survival	% 3 dph survival	% 5 dph survival
1	57.44±3.08 ^b	16.15±4.96 ^b	1.56±1.04 ^b
2	59.85±2.94 ^b	11.59±2.22 ^c	2.95±1.98 ^a
3	85.25±9.97 ^a	28.33±8.01 ^a	3.98±1.52 ^a
4	87.04±2.92 ^a	28.12±2.05 ^a	3.73±1.08 ^a

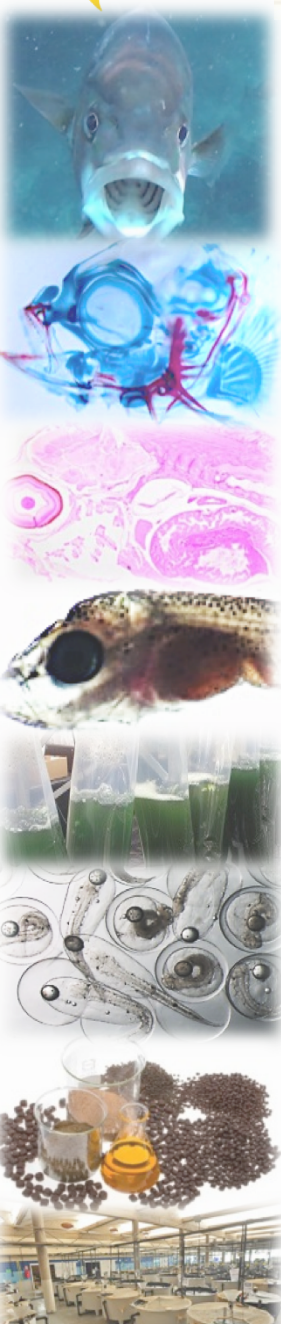
* Means ± SD. Different superscripts in the same column indicate significant differences (P < 0.05).

Selected fatty acid composition (% total fatty acids) of eggs obtained after feeding period with the experimental diets

Fatty acid	Diet 1	Diet 2	Diet 3	Diet 4
14:0	2.61 ± 0.33	2.30 ± 0.12	2.05 ± 0.04	1.81 ± 0.37
16:0	18.73 ± 0.86	18.18 ± 0.62	18.52 ± 0.23	18.50 ± 0.45
18:0	5.78 ± 0.48	6.16 ± 0.22	4.90 ± 0.15	5.48 ± 0.66
18:1n-9	20.88 ± 2.43 ^b	20.85 ± 0.12 ^b	24.05 ± 0.57 ^a	24.43 ± 2.21 ^a
18:1n-7	4.09 ± 0.29	3.26 ± 0.17	3.04 ± 0.07	3.41 ± 0.48
18:2n-6	6.82 ± 0.45 ^c	9.02 ± 0.56 ^{ab}	10.39 ± 0.01 ^a	8.66 ± 0.21 ^b
18:3n-6	0.21 ± 0.01 ^a	0.17 ± 0.01 ^b	0.16 ± 0.01 ^b	0.19 ± 0.01 ^{ab}
18:3n-3	1.02 ± 0.06 ^c	4.67 ± 0.21 ^b	6.54 ± 0.40 ^a	4.07 ± 0.44 ^b
20:4n-6 (ARA)	1.33 ± 0.01 ^a	1.16 ± 0.08 ^{ab}	0.93 ± 0.01 ^c	1.07 ± 0.07 ^{bc}
20:5n-3 (EPA)	6.35 ± 1.10 ^a	6.22 ± 0.07 ^a	4.86 ± 0.11 ^b	4.98 ± 0.97 ^b
22:6n-3 (DHA)	16.88 ± 0.84 ^a	14.47 ± 0.35 ^b	12.43 ± 0.04 ^c	15.05 ± 0.28 ^{ab}
Total n-3	28.40 ± 2.36	28.80 ± 0.14	26.98 ± 0.54	27.46 ± 1.80
Total n-6	8.94 ± 0.40 ^b	10.84 ± 0.61 ^a	11.97 ± 0.01 ^a	10.48 ± 0.36 ^{ab}
Total n-9	21.50 ± 2.40	21.38 ± 0.13	24.56 ± 0.58	24.99 ± 2.16
Total n-3 HUFA	26.24 ± 2.01 ^a	22.97 ± 0.37 ^{ab}	19.63 ± 0.07 ^b	22.57 ± 1.06 ^{ab}
DHA/EPA	2.69 ± 0.34	2.33 ± 0.08	2.56 ± 0.06	3.08 ± 0.54
DHA/ARA	12.79 ± 0.71	12.57 ± 1.12	13.38 ± 0.13	14.08 ± 1.20
EPA/ARA	4.81 ± 0.86	5.39 ± 0.28	5.23 ± 0.08	4.68 ± 1.22
EPA+DHA	23.22 ± 1.94 ^a	20.69 ± 0.29 ^b	17.29 ± 0.09 ^c	20.02 ± 1.24 ^b
n-3/n-6	3.19 ± 0.41	2.66 ± 0.16	2.26 ± 0.05	2.63 ± 0.26

Selected fatty acid composition (% total fatty acids) of eggs obtained after feeding period with the experimental diets

Fatty acid	Diet 1	Diet 2	Diet 3	Diet 4
14:0	2.61 ± 0.33	2.30 ± 0.12	2.05 ± 0.04	1.81 ± 0.37
16:0	18.73 ± 0.86	18.18 ± 0.62	18.52 ± 0.23	18.50 ± 0.45
18:0	5.78 ± 0.48	6.16 ± 0.22	4.90 ± 0.15	5.48 ± 0.66
18:1n-9	20.88 ± 2.43 ^b	20.85 ± 0.12 ^b	24.05 ± 0.57 ^a	24.43 ± 2.21 ^a
18:1n-7	4.09 ± 0.29	3.26 ± 0.17	3.04 ± 0.07	3.41 ± 0.48
18:2n-6	6.82 ± 0.45 ^c	9.02 ± 0.56 ^{ab}	10.39 ± 0.01 ^a	8.66 ± 0.21 ^b
18:3n-6	0.21 ± 0.01 ^a	0.17 ± 0.01 ^b	0.16 ± 0.01 ^b	0.19 ± 0.01 ^{ab}
18:3n-3	1.02 ± 0.06 ^c	4.67 ± 0.21 ^b	6.54 ± 0.40 ^a	4.07 ± 0.44 ^b
20:4n-6 (ARA)	1.33 ± 0.01 ^a	1.16 ± 0.08 ^{ab}	0.93 ± 0.01 ^c	1.07 ± 0.07 ^{bc}
20:5n-3 (EPA)	6.35 ± 1.10 ^a	6.22 ± 0.07 ^a	4.86 ± 0.11 ^b	4.98 ± 0.97 ^b
22:6n-3 (DHA)	16.88 ± 0.84 ^a	14.47 ± 0.35 ^b	12.43 ± 0.04 ^c	15.05 ± 0.28 ^{ab}
Total n-3	28.40 ± 2.36	28.80 ± 0.14	26.98 ± 0.54	27.46 ± 1.80
Total n-6	8.94 ± 0.40 ^b	10.84 ± 0.61 ^a	11.97 ± 0.01 ^a	10.48 ± 0.36 ^{ab}
Total n-9	21.50 ± 2.40	21.38 ± 0.13	24.56 ± 0.58	24.99 ± 2.16
Total n-3 HUFA	26.24 ± 2.01 ^a	22.97 ± 0.37 ^{ab}	19.63 ± 0.07 ^b	22.57 ± 1.06 ^{ab}
DHA/EPA	2.69 ± 0.34	2.33 ± 0.08	2.56 ± 0.06	3.08 ± 0.54
DHA/ARA	12.79 ± 0.71	12.57 ± 1.12	13.38 ± 0.13	14.08 ± 1.20
EPA/ARA	4.81 ± 0.86	5.39 ± 0.28	5.23 ± 0.08	4.68 ± 1.22
EPA+DHA	23.22 ± 1.94 ^a	20.69 ± 0.29 ^b	17.29 ± 0.09 ^c	20.02 ± 1.24 ^b
n-3/n-6	3.19 ± 0.41	2.66 ± 0.16	2.26 ± 0.05	2.63 ± 0.26





- 1. Best spawn quality and production parameters were obtained from broodstock fed diet 3 (1.57% EPA+DHA) and diet 4 (0.96% EPA+DHA).**
- 2. Lowest fertilization and egg viability were obtained from broodstock fed diet 1 (2.8% EPA+DHA) and diet 2 (2.17% EPA+DHA) .**
- 3. Egg fatty acid compositions are affected by broodstock diets in greater amberjack.**



Co-funded by the Seventh Framework Programme of the European Union



Thank you for your attention

EFFECT OF DIETARY FATTY ACIDS ON SPAWN QUALITY IN GREATER AMBERJACK (*Seriola dumerili*) BROODSTOCK



S. Sarih¹, A. Djellata¹, J. Roo¹, C. M. Hernández¹, R. Fontanillas², G. Rosenlund², M. Izquierdo¹ and H. Fernández-Palacios¹

ECOAQUA
www.ecoaqua.eu

¹Grupo de Investigación en Acuicultura (GIA), IU-ECOAQUA, Universidad de Las Palmas de Gran Canaria, Crta. Taliarte s/n, 35214 Telde, Las Palmas, Spain

² Skretting Aquaculture Research Centre AS, PO Box 48, N-4001 Stavanger, Norway

