



**Annual Coordination Meeting, UL Nancy, France
2-4 February 2016**

Exploring the biological and socioeconomic potential of new/emerging candidate fish species for the expansion of the European aquaculture industry





Reasons for the Amendment

- **P24. ITTICAL faced difficulties in acquiring a greater amberjack broodstock for WP3 Reproduction & Genetics**
- **P30. CULMAREX decided to exit the consortium in March 2015, they could not implement WP 20**
- **P4.IOLR and P25.DOR could not import feed produced by P31. IRIDA in time, requiring another production**
- **Need to modify the submission dates of some Deliverables**



Reasons for the Amendment

- **P24. ITTICAL faced difficulties in acquiring a greater amberjack broodstock for WP3 Reproduction & Genetics**

P23. ARGO (Greece) purchased another stock (24 mature fish)

- **All rearing and sampling activities for Task 3.1 moved to ARGO, overseen/organized by HCMR**



Reasons for the Amendment

- **P30. CULMAREX decided to exit the consortium in March 2015, they could not implement WP 20**

P1. HCMR and P3. IRTA maintained their budget

- **P1. HCMR still to do what was planned originally**
- **P3. IRTA modified their tasks by including more tank experiments, instead of the original sea cage experiments planned for CULMAREX**



Amendment 2 to ANNEX I (DOW)



Reasons for the Amendment

- **P4.IOLR and P25.DOR could not import feed produced by P31.IRIDA in time, requiring another production**

P31. IRIDA will produce feed again and send to Israel



Amendment 2 to ANNEX I (DOW)



Budget modifications caused by the Amendment

- **Reduction in the budget of P24. ITTICAL**
- **Reduction in the budget of P30. CULMAREX**
- **Increase in the budget of**
 - **HCMR, IOLR, UNIBA, IFREMER, ULL, ARGO, IRIDA**

- **Amendment accepted by Scientific Officer**
- **Under evaluation by Legal Officer**
- **Upon approval will be sent to Partners and website**



Reporting

1st Periodic Report, Deliverables and Financial Report have been accepted without ANY questions on the scientific or financial items.

Marta Iglesias:

“... report was well-structured, ... in good detail ... easy to follow ...”

Let's keep the same rhythm!



Reporting

Guidance notes on project reporting:
project_reporting_en.pdf
Available at www.diversifyfish.com, INTRA, EU
Support Documents

- **Deliverables** according to the DOW timetable!!!
- **Periodic reports** at 12, 30, 48 and 60 Mo
 - 60 days after the end of the period
 - Period 2 report **(May 2016)**
- **Final Report** (Mo 62)



DELIVERABLES



List of deliverables

Deliverable Number ⁶¹	Deliverable Title	Lead beneficiary number	Estimated indicative person-months	Nature ⁶²	Dissemination level ⁶³	Delivery date ⁶⁴
D3.1	Establishment of quantitative PCR assays to measure transcript levels of target genes in greater amberjack (i.e., LHβ, FSHβ, leptin, Vg and Vg receptor)	4	6.00	R	PU	12
D3.2	Establishment of hormone specific ELISAs for measuring LH, FSH and leptin in greater amberjack	4	6.00	R	PU	18
	Identification of possible reproductive					

➤ Delivered on the electronic su

➔ prepared by Task/Deliverable leader (clear link between **Task, Deliverable & Partner** in the DOW)

Procedure:

submitted
submitted
submitted
uploading

➤ Use the same www.diversifyf

WT3: Work package description

Project Number ¹	603121	Project Acronym ²	DIVERSIFY
One form per Work Package			
Work package number ^{3a}	WP6	Type of activity ^{3b}	RTD
Work package title	Reproduction and Genetics - wreckfish		
Start month	1	End month	54
Lead beneficiary number ^{3c}	8		

Objectives

- Increase the availability of wreckfish broodstocks in captivity.
- Describe the reproductive cycle in captivity at the level of the pituitary and gonad.
- Develop spawning induction procedures for in vitro fertilization, as well as spontaneous tank spawning.
- Develop a CASA for evaluation of wreckfish sperm and establish cryopreservation protocols for use in in vitro fertilization applications.

Description of work and role of partners

Description of work (possibly broken down into tasks), and role of participants (Partner abbreviations)

This WP includes tasks to (a) increase the availability of wreckfish broodstocks, (b) study the reproductive cycle of fish in captivity to understand the reproductive dysfunctions (c) develop spawning induction methods for the acquisition of eggs and (d) develop methods for the study of wreckfish sperm and cryopreservation for in vitro fertilization applications.

EU Budget allocations: 48,632€ (HCMR), 4,000€ (RTA), 88,370€ (IEO), 28,600€ (IFREMER), 3,360€ (ULL), 70,200€ (MCMC) (58,330€ (MCMC))

Task 6.1 Collect wild fish to establish new broodstocks (led by CMRM). To increase the number of broodstock wild fish, juveniles and adults are collected from the wild (IEO, CMRM and MCG). The collection of adult fish (compared to these fish live in great depths (0-400 m) and all available broodstock were obtained from the wild as juveniles. Collection will be coordinated (CMRM, IEO) with professionals that collect fish for large public aquariums i.e. Acuario del Gran Canaria (Gran Canaria), MCG and Flying Sharks (<http://www.flyingsharks.eu/>). The collected fish will be maintained under controlled conditions on board and photoperiod, and monitored every 4 months for growth and reproductive maturation, using gonada-biopsies. This task will both provide collection methods and availability of captive broodstock for SMEs and the aquaculture industry. This task will result in deliverable D6.4 Establish reliable collection methods and protocols to form new wreckfish broodstocks.

approval
approval
and

available at
protocols



DELIVERABLES

FP7-KBBE-2013-07, DIVERSIFY 603121



FP7-KBBE-2013-07, DIVERSIFY 603121



Deliverable Report

Deliverable No:	D7.3	Delivery Month:	24
Deliverable Title	Comparative effectiveness of hormonal treatments for spawning induction in captive grey mullet		
WP No:	7	WP Lead beneficiary:	P4. IOLR
WP Title:	Reproduction and Genetics – grey mullet		
Task No:	7.1	Task Lead beneficiary:	P4. IOLR
Task Title:	Evaluation of the effectiveness of hormone-based treatments on synchronizing gonadal development		
Other beneficiaries:	P1. HCMR	P3. IRTA	P4. IOLR
	P13. UNIBA	P8. IEO	P9. UL
	P15. ULL	P24. ITICAL	P25. DOR

Deliverable Report

Delivery Month:	24	
of the Deliverable as it was written in the DOW. It should be to show the full scope of the deliverable and all the necessary		
WP Lead beneficiary:	P1. HCMR	
OW		
Task Lead beneficiary:	P1. HCMR	
ne from the DOW and should be complete and descriptive:		
P3. IRTA	P4. IOLR	P5. UNIABDN
P8. IEO	P9. UL	P10. TU/e
P13. UNIBA	P14. IFREMER	P15. ULL
P18. CTAQUA	P19. CMRM	P20. SARC
P23. ARGO	P24. ITICAL	P25. DOR
P28. CANEXMAR	P29. ASIALOR	P30. CULMAREX
P33. FGM	P34. BVFi	P35. MASZ
P38. HRH		
Expected month:	48	
.....		

Constantinos Mylonas 2/2/15 11:07 AM

Comment [1]: The information in this Table should be EXACTLY as it is in the DOW

Constantinos Mylonas 2/2/15 11:07 AM

Comment [2]: This is the actual delivery month.

Constantinos Mylonas 2/2/15 11:07 AM

Comment [3]: Keep only the Partners that were involved in the Deliverable.

Constantinos Mylonas 2/2/15 11:07 AM

Comment [4]: This is the expected DOW

2/2/15 11:09 AM

Description should be DOW (See es at the end of the DOW).

24 AM

ile e text.

s, inals as ng the

rted "in options)

m and n in the

Our reports/deliverables should be consistent in both format and content, and as error

All submitted deliverables are available at ECAS system & www.diversifyfish/INTRA/deliverables

!!Look at them as examples!!

INTRODUCTION.....
 MATERIALS AND M
 1. Broodstock source
 2. Hormonal acceler
 3. Spawning inductio
 RESULTS.....
 DISCUSSION AND CO
 DEVIATIONS

OTIS & PROTOCOLS





Access various aspects of project!!

The screenshot shows the EC Participant Portal homepage. At the top, there is a navigation bar with links for 'pbox', 'meteo', 'Gmail', 'Google', 'Facebook', 'LinkedIn', 'webmail', 'EU Participant Portal', 'Weebly', 'Diversify', 'kranios', 'fishrepro', 'BOC 1Bank', 'Alpha Bank', and 'winbank'. A search bar and a language dropdown menu (set to 'English') are also present. The main header features the European Commission logo and the text 'RESEARCH & INNOVATION Participant Portal'. Below this is a breadcrumb trail: 'European Commission > Research & Innovation > Participant Portal > Home'. A secondary navigation bar includes 'HOME', 'FUNDING OPPORTUNITIES', 'HOW TO PARTICIPATE', 'EXPERTS', 'SUPPORT', a search bar labeled 'Search PP', and 'LOGIN' and 'REGISTER' buttons. The main content area features a large banner for 'Horizon 2020 Funding Starting from 1/1/2014' with a globe graphic. Below the banner, a text block states: 'On this site you can find and secure **funding** for projects under the following EU programmes:'. A bulleted list follows:

- **2014-2020** Horizon 2020 - research and innovation framework programme
- **2007-2013** 7th research framework programme (FP7) and Competitiveness & Innovation Programme (CIP)
- Research Fund for Coal & Steel, COSME, 3rd Health Programme, Consumer Programme, Justice Programme

At the bottom, there are two columns labeled 'Non-registered users' and 'Registered users'.



Access various aspects of project!!

SESAM – Deliverables Management Page
Technology Platforms | Security Research | FP7 on EUROPA | FP6 - Sixth Framework Programme | CORDIS News | Current Council Presidency | ERAWATCH | Legal Notice

RESEARCH & INNOVATION
European Commission
Participant Portal - Grant Management - Scientific Reporting

7 Home > Project Management > Deliverables Management

You are logged as:
Constantinos MYLONAS [Alkinoos]
[Helpdesk](#)

Menu
Project Home
Review Reports
Reports
Deliverables
Publications
Journal Request
Dissemination Activities
Patents
Exploitable Foregrounds
Close window

Deliverables Management

Instrument CP - Collaborative project

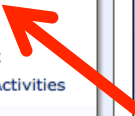
Project Information 603121 - Exploring the biological and socio-economic potential of new/emerging candidate fish species for the expansion of t

Username Alkinoos

Filter by deliverable type ALL

Deliverables in progress

WP n°	Deliverable N°	Title	Version	Lead beneficiary	Person months	Nature	Dissemination level	Document type	Delivery date from Annex I (proj month)	Forecast date	Status
31	5	Collaboration agreement with food industry and consumer organization; linkage of websites	0.0	FUNDACION CENTRO TECNOLÓGICO ACUICULTURA DE ANDALUCIA	0.27	Report	PU		31/08/2014 (9 months)	31/08/2014	Pending
2	2	Genetic characterisation of different meagre captive broodstocks and evaluation of available variability (M12)	0.0	FUNDACION CANARIA PARQUE CIENTIFICO TECNOLÓGICO DE LA UNIVERSIDAD DE LAS PALMAS DE GRAN CANARIA	7.0	Report	PU		30/11/2014 (12 months)	30/11/2014	Pending
3	1	Establishment of quantitative PCR assays to measure transcript levels of target genes in greater amberjack	0.0	ISRAEL OCEANOGRAPHIC AND LIMNOLOGICAL RESEARCH LIMITED	6.0	Report	PU		30/11/2014 (12 months)	30/11/2014	Pending





REPRODUCTION AND GENETICS

meagre



[d2.1_meagre_transcriptome_20150526.pdf](#)
Download File



[d2.1_annex_20150526.xlsx](#)
Download File



[d2.2_genetics_of_meagre_20141214.pdf](#)
Download File



[d2.3_paired_spawning_in_meagre_20150922.pdf](#)
Download File

greater amberjack



[d3.1_pcr_for_lhβ,_fshβ,_leptin,_vg_and_vgr_20150317.pdf](#)
Download File



[d3.3_amberjack_prol_apop_vtg.pdf](#)
Download File

pikeperch



[d4.1_genetics_pikeperch_20141120.pdf](#)
Download File



[d4.2_genetics_pikeperch_20150320.pdf](#)
Download File

Atlantic halibut

Meetings & Activities >

DOW, GA and CA

EU support documents

Management >

Forms & protocols

Deliverables

Scientific & Financial Reporting



DELIVERABLES - status so far



➤ Total number of Deliverables	202
➤ Up to Jan 2016 (mo 26)	62 (30%)
➤ Delivered	51 (82%) (not so great!)
➤ Delayed	2-13 months
➤ Up to May 2016 (mo 30)	73

Requests for delays must be justifiable and on time!

2nd Periodic Report - Mid term evaluation (May 2016)

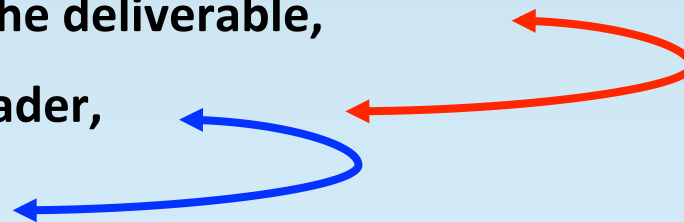
- **intent to submit ALL due deliverables!!!!!!**



DELIVERABLES – summary of submission procedure



- Task leader will be notified 2 months before (1st reminder) and 15 days before the submission date (last reminder asking for the Deliverable)
- We (PC) need the Deliverable, 15 days prior to submission date, in order to review the format, content, etc.
- The order is
 - Task leader prepares the deliverable,
 - then sends it to WP leader,
 - then to GWP leader,
 - then to PC (15 days before the submission date)
- PC uploads to ECAS and website





Periodic Reports

Guidance notes on project reporting:
project_reporting_en.pdf
Available at www.diversifyfish.com, INTRA, EU
Support Documents

- **Periodic reports at 12, 30, 48 and 60 Mo**
 - **60 days after the end of the period (May 2016)**
 - **Period 2 report (May 2016)**
 - **Based on each of the 31 WPs**
 - **Preparation begins at the Task level**



RERIODIC REPORT



- Each WP leader and member will be send the format to prepare their WP for the Periodic Report, which includes:
 - Information table (WP name, Partners, Scientists, etc.)
 - Objectives (from DOW)
 - Task headings (from DOW)
 - Example of the format of Tables/Figures
 - Brief instructions

DIVERSIFY-GA 602131

WP No:	2		WP Lead beneficiary:		P3. IRTA
WP Title (from DOW):	Reproduction and Genetics - meagre				
Other beneficiaries (from DOW):	P1. HCMR	P2. FCPCT	P14. IFREMER	P ₂	
	P ₂	P ₂	P ₂	P ₂	P ₂
Lead Scientist preparing the Report (WP leader):	Neil Duncan				
Other Scientists participating:	Juan Manuel Afonso (P2), Costas Tsigenopoulos (P1), Christian Fauvel (P14), Constantinos Mylonas (P1)				

Objectives

- 1.-> Evaluate the genetic variation in the available captive broodstocks of meagre,
- 2.-> Genetic characterization of fast and slow growers,
- 3.-> Development of tools that facilitate the implementation of genetic selection programs,
 - a.-> Develop protocols for the paired crossing of breeders with spontaneous spawning,
 - b.-> Describe sperm quality and cryopreservation techniques,
 - c.-> Develop *in vitro* fertilization protocols to provide planned genetic crosses,

Develop a set of SNP markers for genetic selection and stock characterisation.

Summary of progress towards objectives and details for each task:

4 summary of progress towards objectives, highlighting clearly significant results.

Task 2.1. Evaluation of the genetic variation in captive meagre broodstocks (led by FCPCT, Juan Manuel Afonso).

For more examples, see examples for format

1st Periodic report (0-12 mo)

6

Constantinos ... 22/9/14 1:31 PM

Comment [1]: All the information for this Table should be taken from the DOW. This is the example for WP2.

Constantinos ... 22/9/14 1:31 PM

Comment [2]: Here you should put the names of the scientists (and P number), who participated in preparing the report for this period. This is the example for WP2.

Constantinos ... 22/9/14 3:22 PM

Comment [3]: These are the objectives exactly as they are shown in the DOW. Please be careful when copy-pasting!

Constantinos ... 23/9/14 9:26 AM

Comment [4]: List the titles of ALL tasks exactly as they are written in the DOW. If no work has been done for a specific Task, write "No work done during this period". This is the example for WP2.

Constantinos ... 22/9/14 1:31 PM

Comment [5]: Write the full name of the scientist that prepared/is responsible for this section of the report. This is the example for WP2.

Constantin ... 30/10/14 12:53 PM

Comment [6]: Numbering of Tables and Figures should be continuous within each Task. SO the first figure in Task 2.1 should be 2.1.1, the second 2.1.2 and so on. The first figure in Task 2.2 should be 2.2.1 and the second 2.2.2, and so on. The same for the Tables.

Use jpg or png format for all Figures, photos. Reduce the size of the originals as much as possible to avoid increasing the size of the report file!

Photos, figures, etc., should be inserted "in line with text" (Format, Wrapping options)

For Tables from MS Word, copy them and use "PASTE SPECIAL" to insert them in the document as "pdf".



RERIODIC REPORT-road map



- **The WP leaders, GWP leaders and PC are responsible for editing the report to ensure**
 - **Consistent format**
 - **Consistent and high quality content**
- **The order of preparation is:**
 - **Task leader prepares its section for the WP report,**
 - **WP leader reviews and incorporates into the WP report.**
 - **GWP leader reviews and compiles all relevant WPs**
 - **PC reviews and compiles Periodic Report**



- Task leaders complete all Task reports and submit to WP leaders by **20 May 2016** (All researchers!!!)
- WP leaders prepare their WP report and submit to GWP leader by **30 May 2016**
- GWP leaders compile/review all relevant WP reports and submit to PC by **10 June 2016**



PERIODIC REPORT-timing



- **GWP leaders preparation other sections of Periodic Report (with information from above documents) and submit to PC by **20 June 2016**:**
 - **3.1 Publishable summary (0.5 page max per GWP)**
 - **3.2.1 Project objectives for the period (0.5 page max per GWP)**
 - **3.2.2 Work progress and achievements during the period (1 page max per GWP)**
 - **Milestones**



REPORTS & DELIVERABLES – Format information



➤ Format instructions for Report

- Font Times New Roman, 11 point

Our reports/deliverables should be consistent in both format and content, and as error-free as possible!!

- Bold only for major headings (“Task, Subtask”) and “Figure, Table” in the legends and in the main body text
- Figures and Tables inserted as pict (saved as jpeg), at low resolution (150 dpi) and size (5 cm wide) to make the files small (2-300 kb maximum). Center justification.
- Figure legends go at the bottom of the Figure. Table legends go above the Table.
- Photos and Figures, tables, etc should be inserted “in line with text” (format, wrapping) to ensure their relative position.
- The partners should be cited with their Pnumber. abbreviation (e.g., P1. HCMR, P3. IRTA), either in parentheses or not.



REPORTS & DELIVERABLES – Format information



➤ Open Deliverable 3.3

➤ Insert photos, figures, etc “in line with text” (format, wrapping options) to ensure its relative position.

FP7-KBBE-2013-07, DIVERSIFY 603121



Deliverable Report

Deliverable No:	D3.3	Delivery Month:	26	
Deliverable Title	Identification of possible reproductive dysfunction of gametogenesis of greater amberjack reared in captivity based on the comparative evaluation of fish sampled in the wild, in terms of proliferating and apoptotic germ cells, vitellogenin accumulation, yolk content in the oocytes and nutritional status			
WP No:	3	WP Lead beneficiary:	P13. UNIBA	
WP Title:	Reproduction and Genetics - greater amberjack			
Task No:	3.1	Task Lead beneficiary:	P13. UNIBA	
Task Title:	Description of the reproductive cycle of greater amberjack.			
Other beneficiaries:	P1. HCMR	P4. IOLR	P14. IFREMER	P15. ULL
	P23. ARGO	P24. ITTICAL		
Status:	Delivered	Expected month:	24	
.....				

Lead Scientist preparing the Deliverable: Corriero, A. (UNIBA)

Other Scientists participating: Rosenfeld, H. (IOLR); Rodriguez, C., Pérez, J.A., Acosta, N. G. (ULL)

Table of Contents

Objective	2
Description	2
Background	2
Materials and Methods	5
Results	12
Discussion and Conclusions	31
References	34
Deviations:	39



Species Leaders (SL)

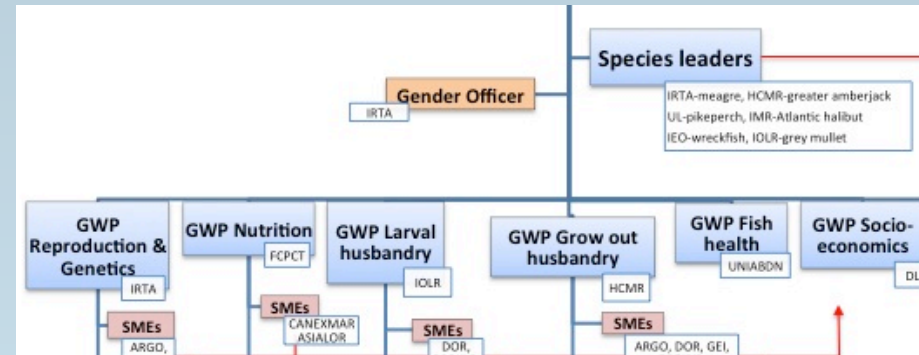
Group WP leaders (GWPL)

Thank you!!!!!!



Group Work Package (GWP) Leaders

➤ Coordinate WP Lead Beneficiaries (LBs)



- **2: Reproduction & Genetics – Neil Duncan, IRTA (Spain)**
- **3: Nutrition – Daniel Montero, FCPCT (Spain)**
- **4: Larval husbandry – Bill Koven, IOLR (Israel)**
- **5: Grow out husbandry – Nikos Papandroulakis, HCMR (Greece)**
- **6: Fish health – Chris Secombes, UNIABDN (UK)**
- **7: Socioeconomics – Gemma Tacke, DLO/LEI (The Netherlands)**



- **Should start submitting our work for publication**
 - **Important to have a number of submitted manuscripts by the Mid Term Evaluation (Fall 2016)**
 - **Please do not delay if work is ready!**



SCIENTIFIC ARTICLES – uploading on ECAS/website



- **Inform PC and WP 31 leader of any publication of any scientific article (include pdf file)**
 - **to upload on the ECAS system (EU requirement)**
 - **to upload on our DIVERSIFY website**

The screenshot shows the DIVERSIFY website interface. At the top, there is a navigation bar with the URL 'www.diversifyfish.eu', social media icons for Twitter, Facebook, and Email, and a search box. Below the navigation bar, there are logos for the European Union and the DIVERSIFY project. A horizontal menu contains the following items: NEWS, SUMMARY, PARTNERS, SPECIES, RESEARCH AREA, DISSEMINATION, and INTRA. The main content area features a blue sidebar on the left with the heading 'SCIENTIFIC ARTICLES' and the text 'Includes relevant articles by DIVERSIFY partners for all species included in the project'. A button labeled 'Contact Dissemination leader' is positioned below this text. The background of the main content area is a photograph of a laboratory or aquaculture facility with rows of equipment.



Communications

Subject: DIVERSIFY – “title”

Respond to this email and **do not change the title**

Avoid using the “Reply to all” button, unless you really want to!

Messages from the PC will be sent

- **only** to the PIs of each partner for consortium issues (unless otherwise requested by the PI)
- to all ‘registered’ team scientists (Partnership list)
- **do not cc the PC to all exchanges**, unless you need my response!



**Annual Coordination Meeting, UL Nancy, France
2-4 February 2016**

Exploring the biological and socioeconomic potential of new/emerging candidate fish species for the expansion of the European aquaculture industry





- **Pre-financing (Dec 2013): 35%+5% security fund,**
- **Interim 2 payment (April 2015): 100% of spent**
- **Interim 3 (100% of spent, but no more than 90% of total budget),**
- **Final ($\geq 10\%$)**

- **For every 375,000 of EU contribution spent, a Certificate of Financial Statements (CFS) must be provided**
 - **(probably only HCMR, FCPCT and IRTA)**



FINANCIAL ISSUES



		RTD (WPs 2-7)	Demonstration	Support	Management (WP 1)	Other (WP8 Dissemination)	Total
Personnel costs		392.673 €			6.239 €	5.529 €	404.441 €
Subcontracting					2.000 €		2.000 €
Other direct	Consumables	333.021 €			4.500 €	4.500 €	342.021 €
	Travel	31.500 €			9.600 €	11.000 €	52.100 €
	Equipment	3.303 €					3.303 €
	sub Total	367.824 €	0 €	0 €	14.100 €	15.500 €	397.424 €
Indirect costs (overheads)	Actual indirect costs	182.444 €			4.896 €	5.182 €	192.522 €
Total budget		942.941 €	0 €	0 €	27.235 €	26.211 €	996.387 €
Requested EU contribution		707.206 €	0 €	0 €	27.235 €	26.211 €	760.652 €

- Respect your budget allocations!!!!
- Reporting separately for RTD, Management and Other (all partners have RTD and Management)
- Subcontracting, equipment must be approved in DOW
- Travel must be justified, including a report for each trip
- Personnel and consumables explained
- VAT not eligible!!!!



FINANCIAL ISSUES



		RTD (WPs 2-7)	Demonstration	Support	Management (WP 1)	Other (WP8 Dissemination)	Total
Personnel costs		392.673 €			6.239 €	5.529 €	404.441 €
Subcontracting					2.000 €		2.000 €
Other direct	Consumables	333.021 €			4.500 €	4.500 €	342.021 €
	Travel	31.500 €			9.600 €	11.000 €	52.100 €
	Equipment	3.303 €					3.303 €
	sub Total	367.824 €	0 €	0 €	14.100 €	15.500 €	397.424 €
Indirect costs (overheads)	Actual indirect costs	182.444 €			4.896 €	5.182 €	192.522 €

Modifications are possible without amendments
 from partner to partner
 from activity to activity
 from category to category (no % restriction)

But only provided there is no impact on the DOW

Prior consultation with EC is preferred, to avoid validation

- Travel must be justified, including a report for each trip
- Personnel and consumables explained
- VAT not eligible !!!!



FINANCIAL ISSUES



Adobe Reader File Edit View Window Help

13.633 DOW DIVERSIFY (603121) 2013-11-14.pdf

334 / 432 137%

Tools Sign Co

Backmarks

- Part A
 - A1: Project summary
 - A2: List of Beneficiaries
 - A3: Budget Breakdown
- Workplan table
 - WT1: List of Work packages
 - WT2: List of Deliverables
 - WT3: Work package description
 - Work package 1
 - Work package 2
 - Work package 3
 - Work package 4
 - Work package 5
 - Work package 6
 - Work package 7
 - Work package 8
 - Work package 9
 - Work package 10
 - Work package 11
 - Work package 12
 - Work package 13
 - Work package 14
 - Work package 15
 - Work package 16
 - Work package 17
 - Work package 18
 - Work package 19
 - Work package 20
 - Work package 21
 - Work package 22
 - Work package 23
 - Work package 24
 - Work package 25
 - Work package 26
 - Work package 27
 - Work package 28
 - Work package 29
 - Work package 30
 - Work package 31
 - WT4: List and Schedule of Milestones
 - WT5: Tentative schedule of Project Reviews
 - WT6: Project Effort by Beneficiary and Work Package
 - WT7: Project Effort by Activity Type per Beneficiary
 - WT8: Project Effort and What it costs

husbandry and GWP Fish health in DIVERSIFY and will contribute, as major research partner and species leader to the work planned for Atlantic halibut. Its participation will be both with analytical labs and large scale facilities for the rearing trials. In particular, IMR will provide access to the Austevoll Research Station. This facility includes a broodstock area (for GWP Reproduction and genetics trials), and intensive rearing facilities for marine larvae and juveniles, with the related infrastructures for live feed production, and a special laboratory for experimental production of formulated feed (for GWP Nutrition and GWP Larval husbandry experiments). The Austevoll Research Station also has analytical laboratories equipped for hormone assays (ELISA, TRF, RIA) and basic molecular biology (RNA and DNA isolation and evaluation). Additionally, DIVERSIFY will take advantage of the laboratories at IMR's main office in Bergen, which holds state of the art laboratories for molecular biology, with full facilities for cloning, transfection, protein isolation, QPCR, histology and immunohistochemistry and a laboratory for fish pathology.

Personnel cost: A total of 183,552 € is allocated to personnel costs. This will cover the cost of existing personnel (researchers, technicians) who will be involved in various WPs in the areas of Reproduction and Genetics, Nutrition, Larval husbandry and Fish health. In addition, specialized administrative staff within the organization will be made available to DIVERSIFY. The Species leader will be also involved in WP31 Dissemination.

Consumables: A total of 218,928 € is allocated to consumables. This includes feeds (larval, nursery, grow out and broodstock) and relevant products (enrichment of diets for larvae). Analytical consumables/chemicals will be covered for GWP Reproduction and genetics (reproductive hormones for the production of GnRHα implants for spawning induction, ELISA reagents, histological processing, general lab chemicals; consumables related to DNA and RNA extractions, probes and other reagents for qPCR). It also includes consumables in GWP Nutrition (production of experimental diets for early weaning), GWP Larval husbandry (probiotics, general consumables for *in vitro* experiments and microbiology, general consumables for construction and maintenance of the RAS and FT rearing systems, and for on-growing *Artemia* culture systems) and GWP Fish health (for cloning, transfection, protein isolation, QPCR, histology, immunocytochemistry, microbiology and molecular biology). General laboratory consumables and office consumables are also included in this category.

Travel costs: A total of 48,000 € is allocated to travel. Travel costs are related to coordinating and management activities of the project (WP1), dissemination activities (WP31), as well as for the implementation of various tasks of the scientific GWPs. Specifically, travel costs are associated with travelling of the Species leader and scientists to the kickoff and annual coordination meetings. Travel costs are also associated with inviting outside scientists to attend and present their relevant work in the species seminar on Atlantic halibut (Y5) and the coordination meeting organized in the premises of IMR (Y2). The scientists will be attending EAS and other conferences in various disciplines (e.g. Fish Reproduction, LARVI, Fish pathology) for dissemination purposes. Travel costs are also foreseen for the implementation of the scientific work in the major GWPs associated with Atlantic halibut. In particular, these include spawning induction and larval husbandry experiments at the site of SWH (Partner 22), which is located in northern Norway.

Equipment: No major equipment will be purchased within the project.

Subcontracting: *Certificate of the Financial Statements (4,851 €)*. An audit certificate is required by all Partners receiving more than 325,000 € of EU contribution. The Partner will acquire this certificate through a subcontract of an external auditor.



FINANCIAL ISSUES – personnel costs



Bookmarks

- Part A
 - A1: Project summary
 - A2: List of Beneficiaries
 - A3: Budget Breakdown
- Workplan table
 - WT1: List of Work packages
 - WT2: List of Deliverables
 - WT3: Work package description
 - Work package 1
 - Work package 2
 - Work package 3
 - Work package 4
 - Work package 5
 - Work package 6
 - Work package 7
 - Work package 8
 - Work package 9
 - Work package 10
 - Work package 11
 - Work package 12
 - Work package 13

WT6:

Project Effort by Beneficiary and Work Package

Project Number ¹	603121	Project Acronym ²	DIVERSIFY
-----------------------------	--------	------------------------------	-----------

Indicative efforts (man-months) per Beneficiary per Work Package

Beneficiary number and short-name	WP 1	WP 2	WP 3	WP 4	WP 5	WP 6	WP 7	WP 8	WP 9	WP 10	WP 11	WP 12	WP 13	WP 14	WP 15	WP 16	WP 17	WP 18	WP 19
1 - HCMR	55.00	15.00	19.00	4.00	0.50	7.90	0.50	0.00	6.00	0.00	0.00	0.00	0.00	0.00	10.50	0.00	0.00	6.50	0.00
2 - FCPCT	5.00	7.00	19.00	0.00	0.00	0.00	0.00	20.00	18.00	5.00	0.00	2.00	20.00	0.00	40.00	0.00	0.00	0.00	0.00
3 - IRTA	1.35	15.90	0.00	0.00	0.00	2.00	2.00	0.00	0.00	0.00	0.00	0.00	1.10	2.40	0.00	2.00	0.00	0.00	2.00
4 - IOLR	2.00	0.00	14.00	0.00	0.00	0.00	7.00	0.00	0.00	0.00	0.00	0.00	38.00	0.00	0.00	0.00	0.00	0.00	9.00
5 - UNIABDN	1.00	0.00	0.00	0.00	0.00	0.00	0.00	0.00	0.00	0.00	0.00	0.00	0.00	0.00	0.00	0.00	0.00	0.00	0.00
6 - DLO	2.00	0.00	0.00	0.00	0.00	0.00	0.00	0.00	0.00	0.00	0.00	0.00	0.00	0.00	0.00	0.00	0.00	0.00	0.00
7 - IMR	0.50	0.00	0.00	0.00	8.00	0.00	0.00	0.00	0.00	0.00	2.00	0.00	0.00	0.00	0.00	0.00	13.00	0.00	0.00
8 - IEO	0.50	0.00	5.60	0.00	0.00	6.60	0.00	0.00	2.80	0.00	0.00	1.10	0.00	0.00	5.50	0.00	0.00	4.20	0.00
9 - UL	1.00	0.00	0.00	1.00	0.00	0.00	0.00	0.00	0.00	0.00	0.00	0.00	0.00	0.00	0.00	13.00	0.00	0.00	0.00
10 - TU/e	0.50	0.00	0.00	0.00	0.00	0.00	0.00	0.00	0.00	0.00	0.00	0.00	0.00	0.00	0.00	0.00	0.00	0.00	0.00
11 - AU	0.50	0.00	0.00	0.00	0.00	0.00	0.00	0.00	0.00	0.00	0.00	0.00	0.00	0.00	0.00	0.00	0.00	0.00	0.00
12 - APROMAR	0.61	0.00	0.00	0.00	0.00	0.00	0.00	0.00	0.00	0.00	0.00	0.00	0.00	0.00	0.00	0.00	0.00	0.00	0.00
13 - UNIBA	0.50	0.00	30.00	0.00	0.00	0.00	3.70	0.00	0.00	0.00	0.00	0.00	5.30	0.00	0.00	0.00	0.00	0.00	0.00
14 - IFREMER	0.25	2.75	2.50	0.00	0.00	3.00	0.50	0.00	0.00	0.00	0.00	0.00	0.00	0.00	0.00	0.00	0.00	0.00	0.00
15 - ULL	0.50	0.00	3.80	0.00	0.00	0.90	3.40	4.50	5.50	4.00	4.50	0.00	0.00	1.30	8.50	0.00	0.00	0.00	0.00
16 - FUNDP	0.50	0.00	0.00	0.00	0.00	0.00	0.00	0.00	0.00	8.00	0.00	0.00	0.00	0.00	0.00	0.00	0.00	0.00	0.00
17 - NIFES	0.50	0.00	0.00	0.00	1.00	0.00	0.00	0.00	0.00	0.00	6.00	0.00	0.00	0.00	0.00	0.00	1.00	0.00	0.00
18 - CTAQUA	0.50	0.00	0.00	0.00	0.00	0.00	0.00	0.00	0.00	0.00	0.00	0.00	1.40	0.00	0.00	0.00	0.00	0.00	0.00
19 - CMRM	0.50	0.00	0.00	0.00	0.00	6.50	0.00	0.00	0.00	0.00	0.00	3.50	0.00	0.00	0.00	0.00	0.00	3.10	0.00

- The Total person months is the effort to be spent during the 5 year period
- You should not deviate excessively from the DOW person months (especially lower!!!)



FINANCIAL ISSUES – “other” costs categories



- **Other direct costs**
 - **Durable Equipment**

**OTHER DIRECT: WP X Explanation: DURABLE EQUIPMENT:
Centrifuge separator, Purchase value: 18.525,00€* included in
Annex I, Linear depreciation over 5 years € 2.456,28**

**OTHER DIRECT: WP Y Explanation: DURABLE EQUIPMENT:
Electronic precision scale, not included in annex I, Not subject
to depreciation according to our normal accountancy rules**€
1.614,00***

***always exclude VAT (See the "Guide to Financial Issues... at
pg. 66).**



FINANCIAL REPORTING – time schedule

All Agree???



- Complete submission by June 2016 - inform financial services of your organization
- Form C submitted from each Partner to PC before **15 June 2016** (you will receive information in **April 2016**).
- We need time to check your forms and submit to EU. In most cases, we will have to send them back-and-forth a few times!!!
- If possible, do not make expenses after 20th of June, to allow financial services to close the accounts
- Form Cs must be submitted to EU for all partners simultaneously by PC. (**Last time, all were ready by 28 December, but waited 1 Partner until 20 January!!!!!!!!!!!!!!**)



Problems with changes in participants

- P24. ITTICAL (Italy): new PI
- P25. DOR (Israel): new PFS, LEAR, PI
- P26. CANEXMAR: new PI
- Others? CHECK if information in the ECAS is valid!!!!

Need to update the Participant list!!!!

will send you the Excel list to update (PIs)



Annual coordination meetings

- IRTA (Spain), UL (France), FCPCT (Spain), IMR (Norway), HCMR (Greece)

➤ **The next ACMs:**

- **Dec 2016 (no Periodic Report)
IRTA Spain ??**
- **Oct 2017 (3rd Periodic Report) ??**
- **Nov 2018 (4th Periodic Report)
HCMR Greece / DG RTD Brussels ??**



Evolved logo for T-Shirts





➤ **Merci beaucoup
Pascal!!!!!!!!!!!!**

➤ **Thank you very much!!!!!!**





Steering Committee (SC)

➤ Composition (DOW)

Project coordinator

GWP leaders

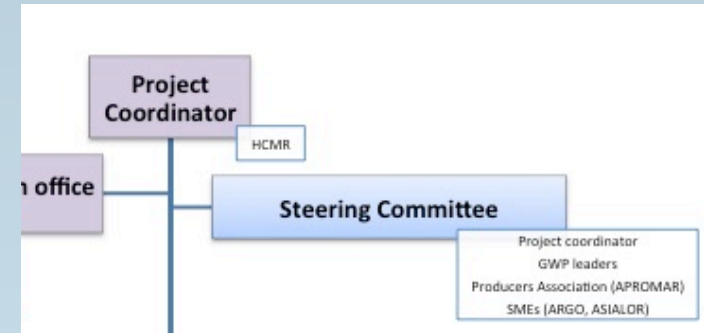
(IRTA, FCPCT, IOLR, HCMR,
UNIABDN, DLO/LEI)

Producers Associations

(APROMAR)

SMEs

(ARGO, CULMAREX, ASIALOR)



Dr. D. Montero

Mrs Tu-linh Ly

➤ Meet once a year, during the coordination meetings